

CANCER Data Sheet

Fig. 1: Trend in mortality from all cancers, persons aged under 75, by gender

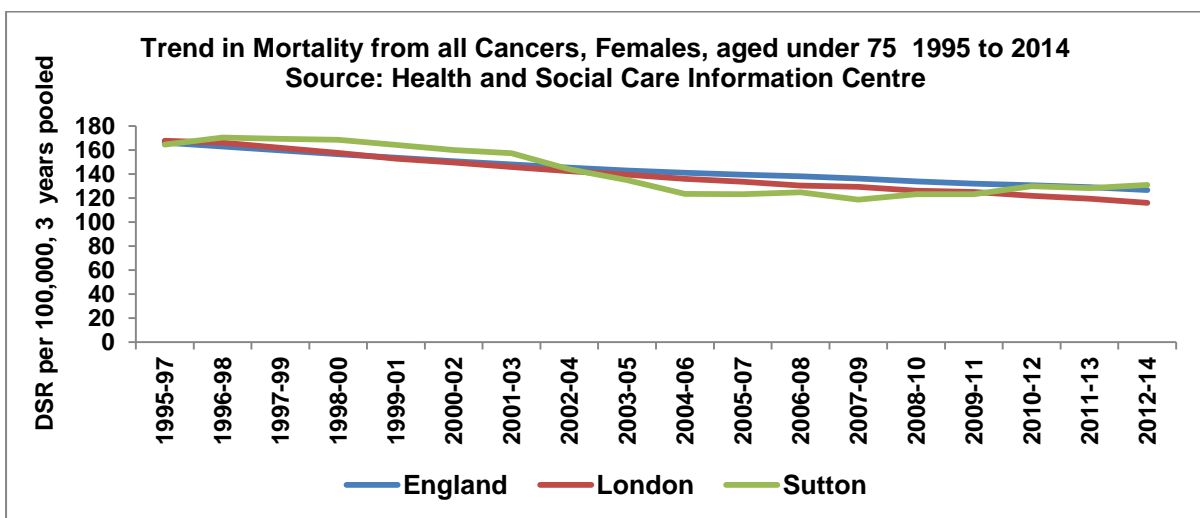
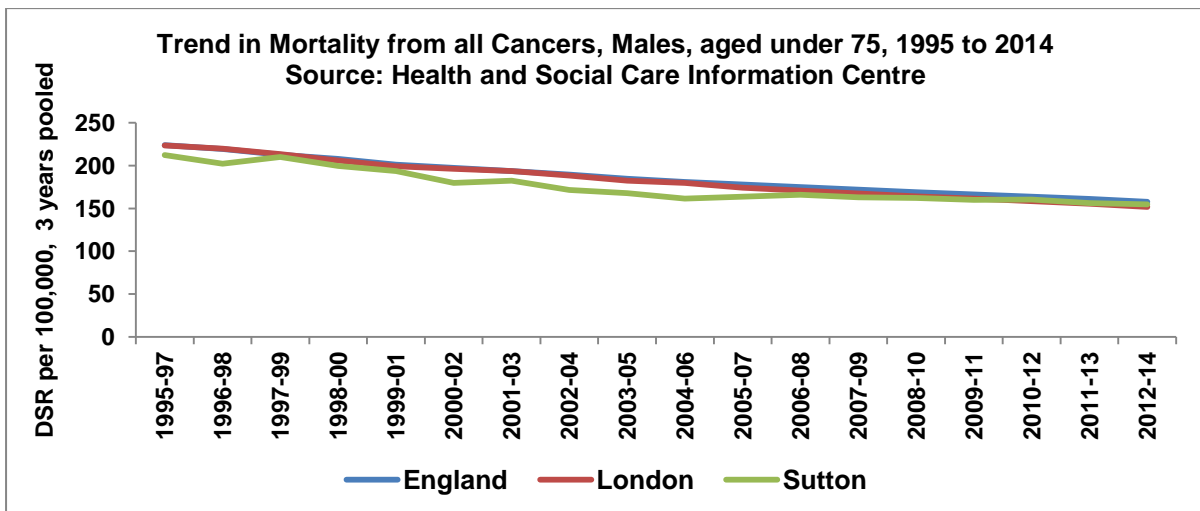
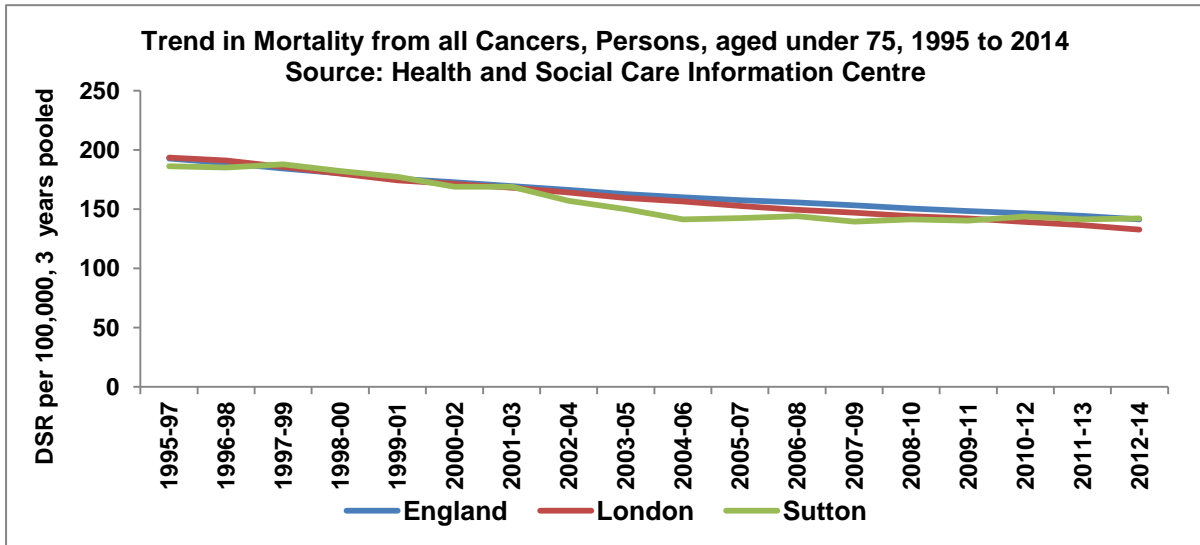


Fig. 2: Mortality from all cancers, aged less than 75, Sutton compared with London authorities

Compared with England statistically Better ■ Similar ■ Worse ■

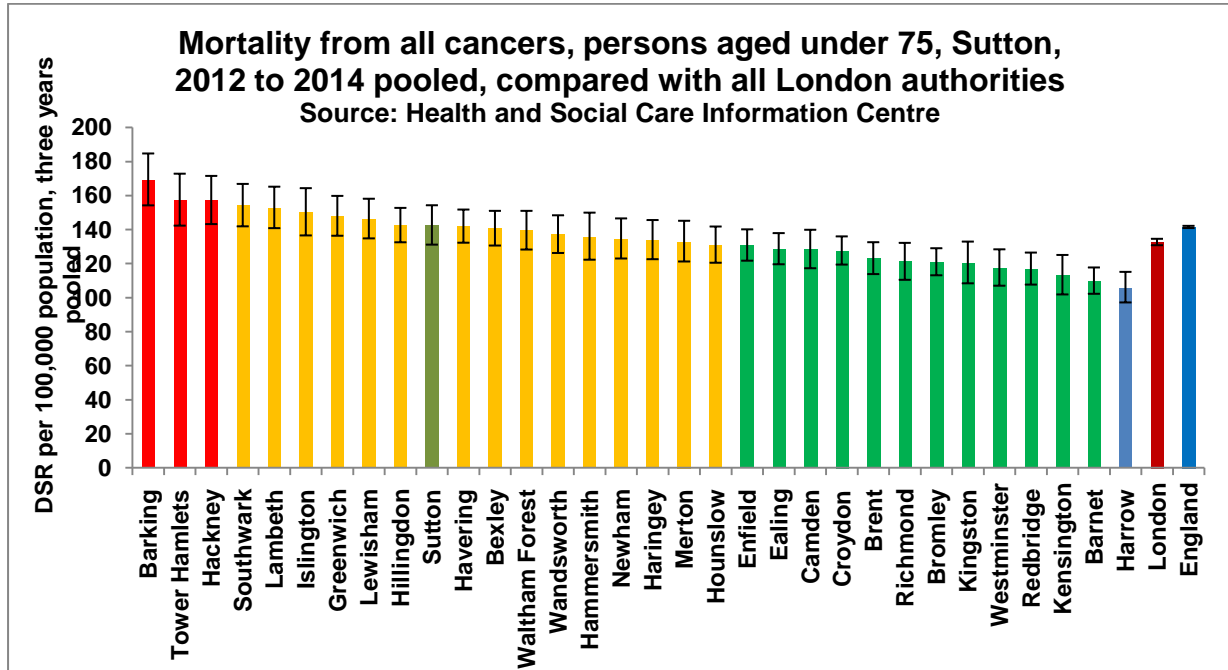


Fig. 3: Trend in mortality from all cancers, all ages

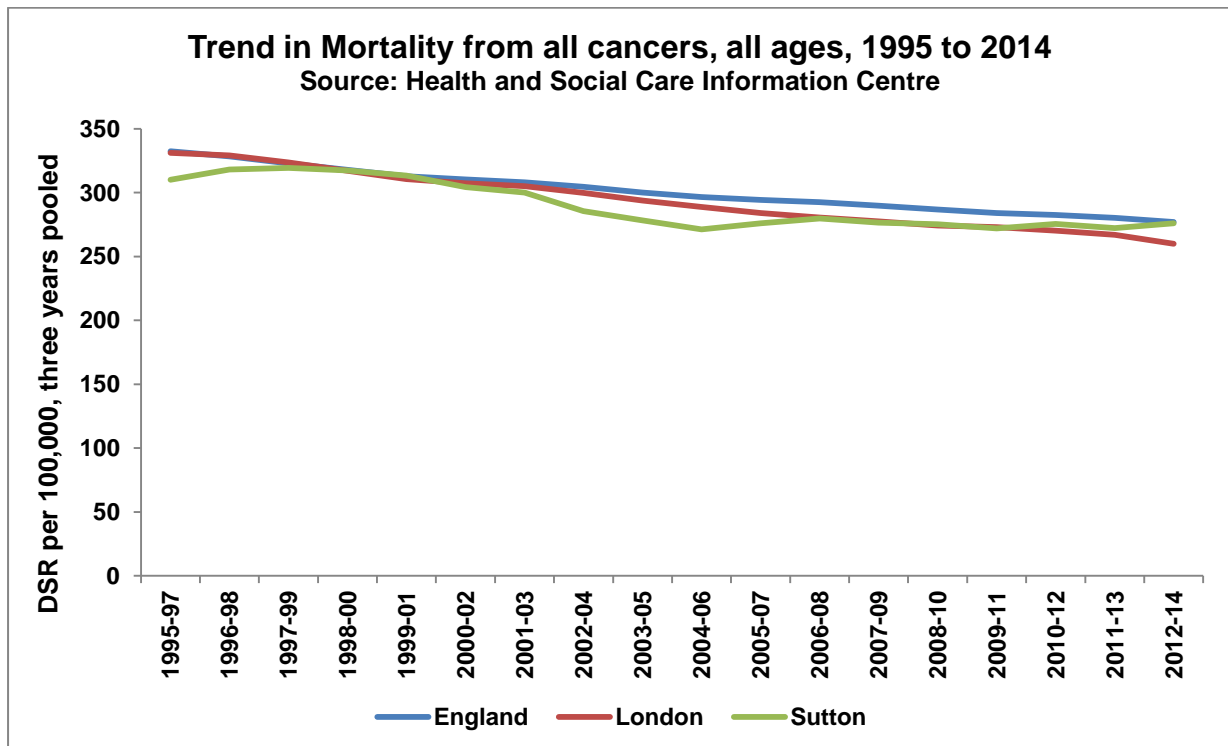


Fig. 4: Trend in mortality from Breast Cancer

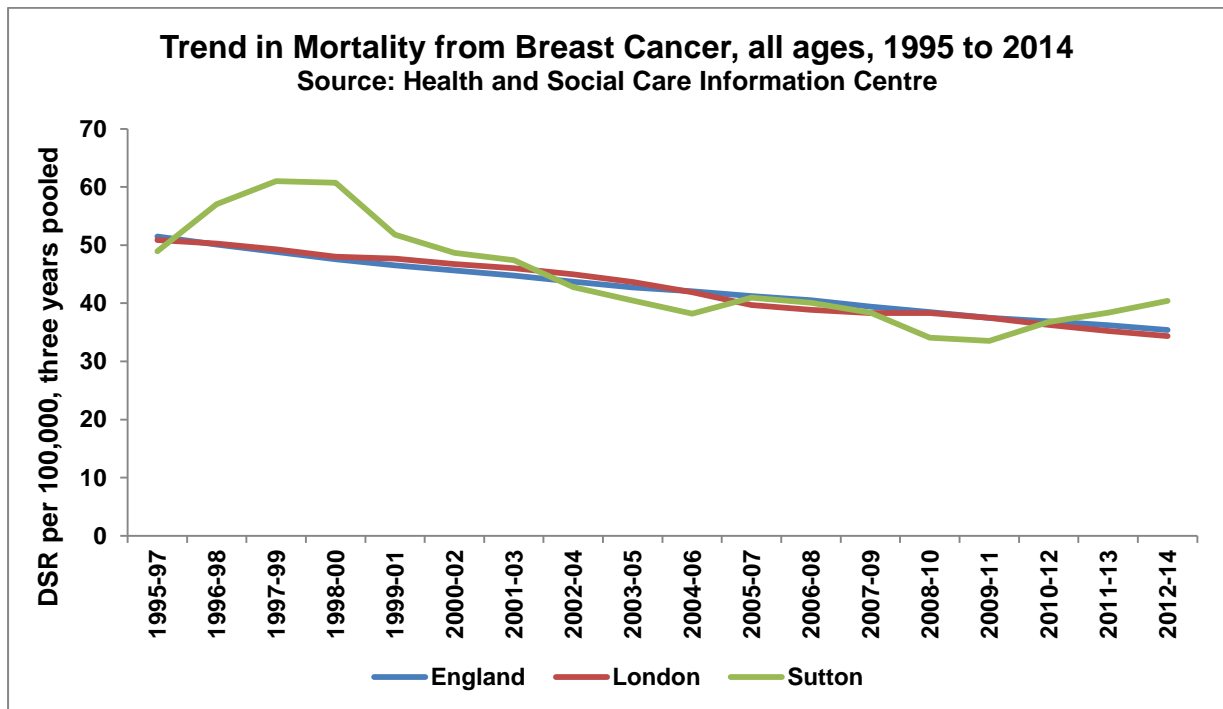


Fig. 5: Trend in mortality from Lung Cancer

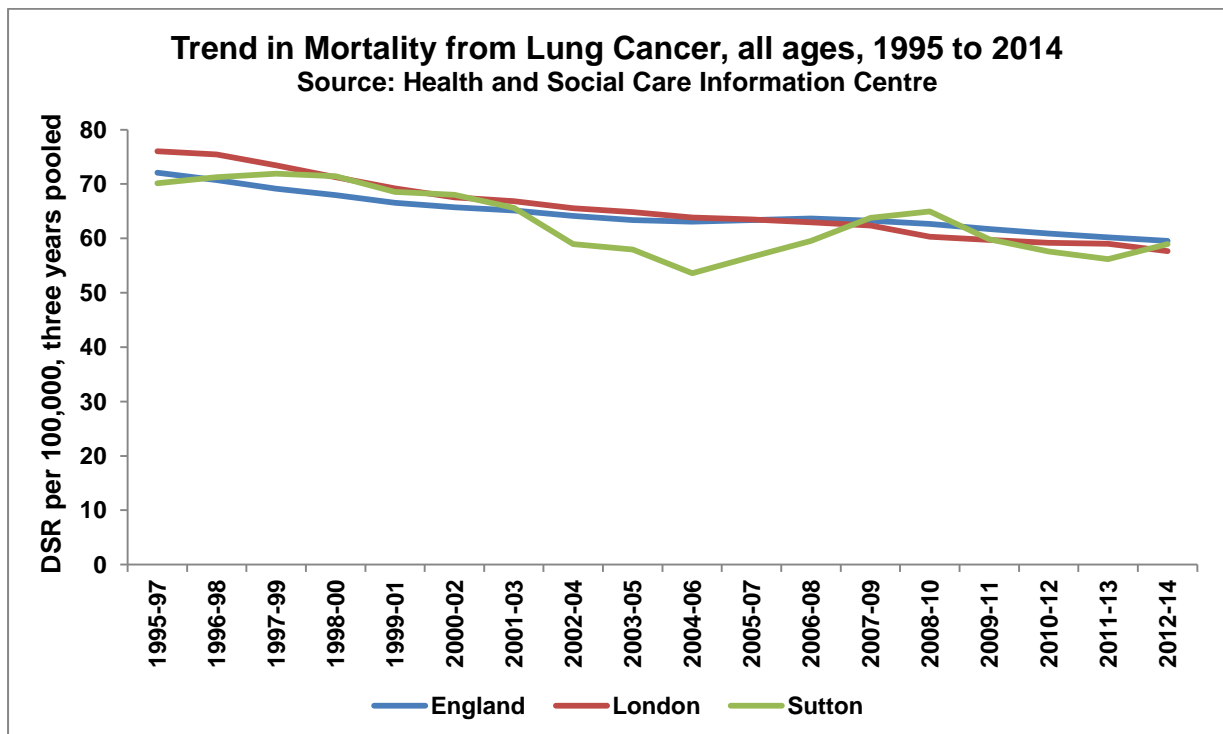


Fig. 6: Trend in mortality from Colorectal Cancer

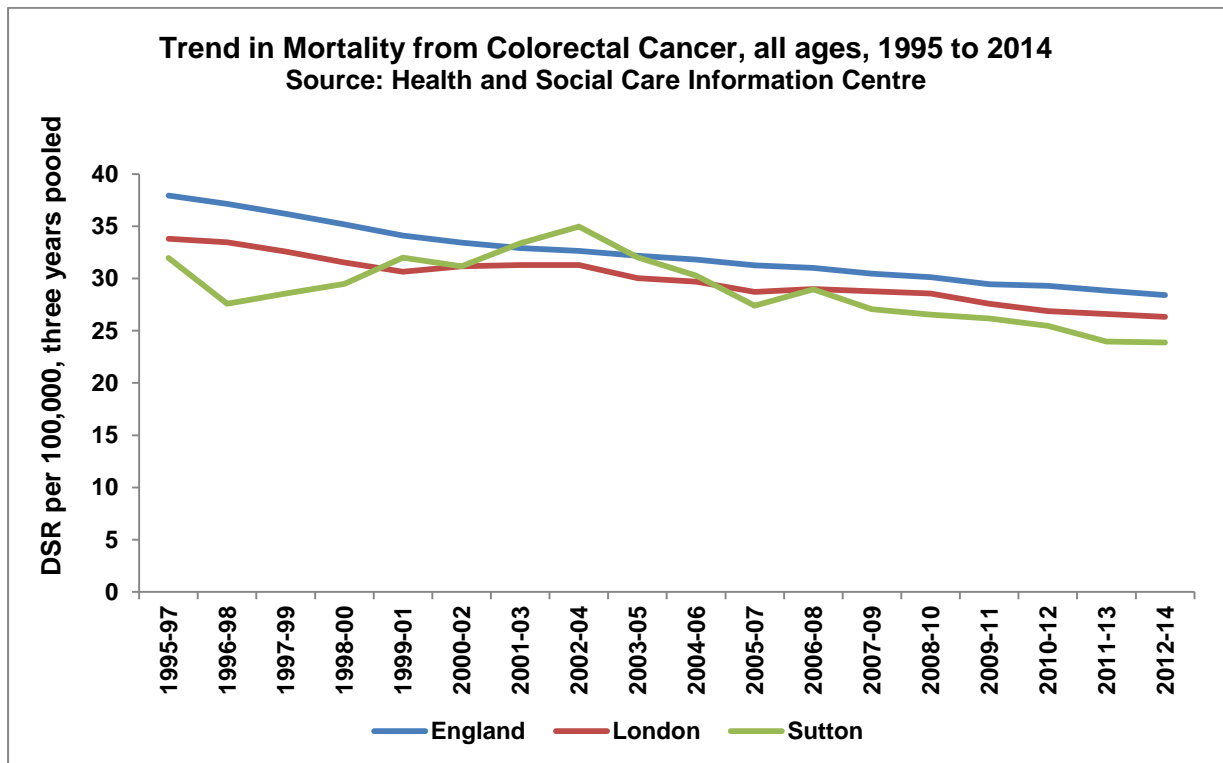


Fig. 7: Standardised Mortality Ratio by ward for deaths from all cancer, less than 75 years, 2008-12

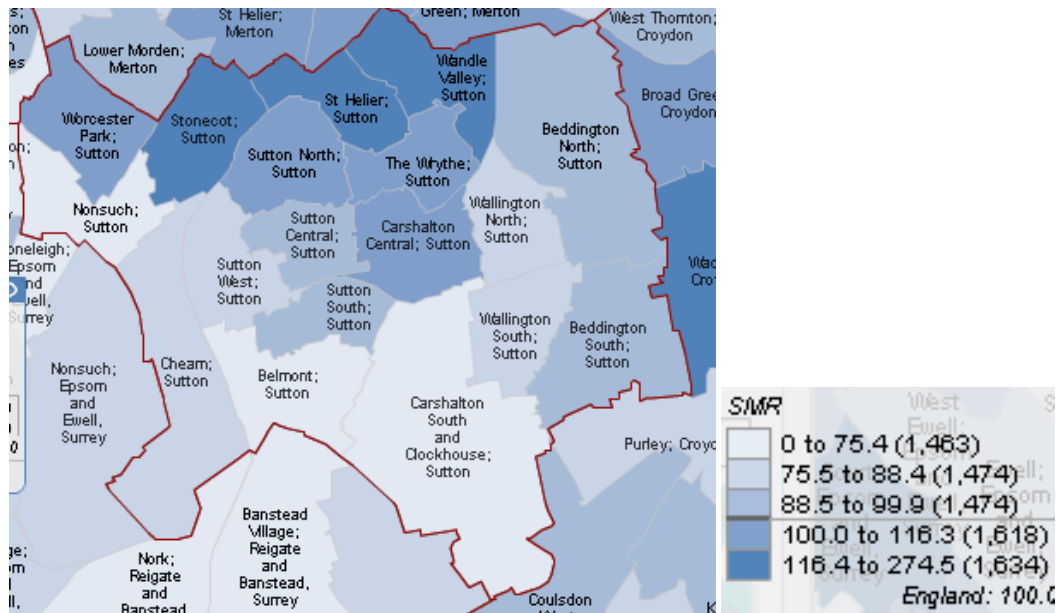


Fig. 8: Standardised Mortality Ratio by ward for all cancer, all ages, 2008-12

