

DOMESTIC VIOLENCE AND ABUSE Data Sheet

Figure 1: Violent crimes committed by domestic offenders in England and Wales

Source: Crime Survey for England and Wales, Office for National Statistics

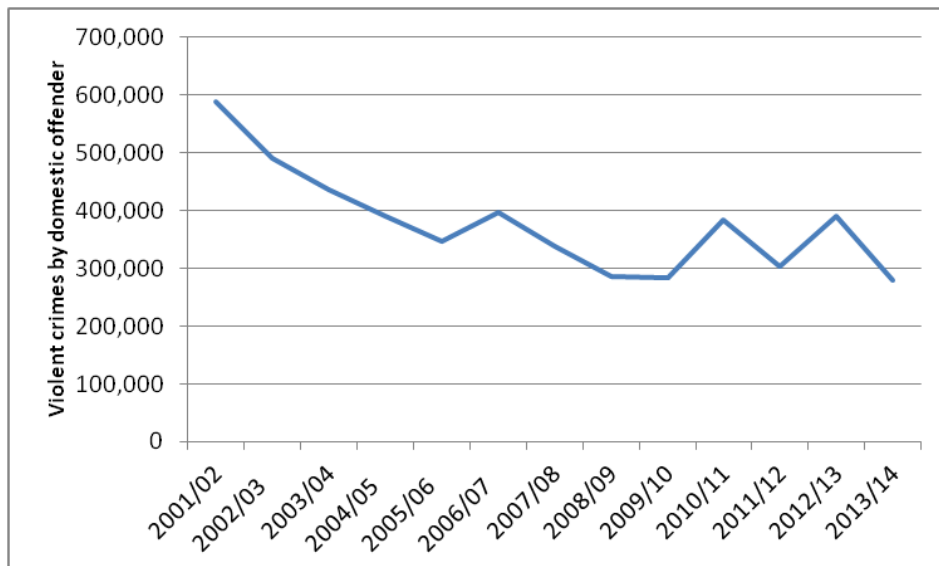


Figure 2: National Estimates of number of victims of any domestic abuse (partner or family non-physical abuse, threats, force, sexual assault or stalking)

Source: Crime Survey for England and Wales, Office for National Statistics

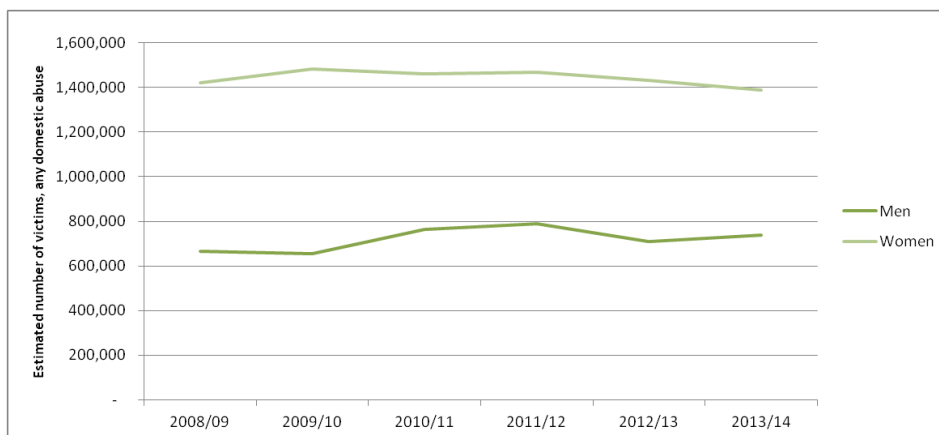




Figure 3: Domestic abuse in England and Wales; Adult victims (16-59) by household income and sex

Source: Crime Survey for England and Wales, Office for National Statistics

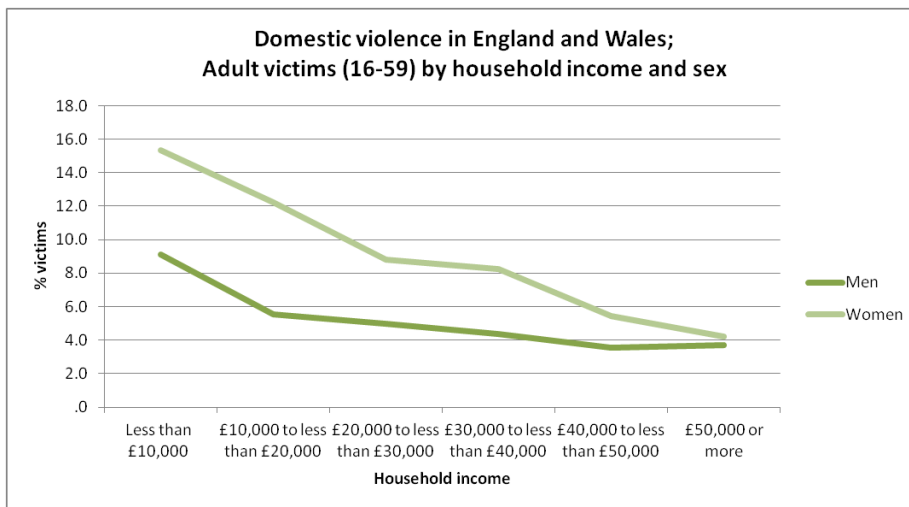


Figure 4: Rate of domestic violence with injury in Sutton, and statistical partners within London (year to June 2015)

Source: Mayor of London Office for Policing and Crime and Office for National Statistics

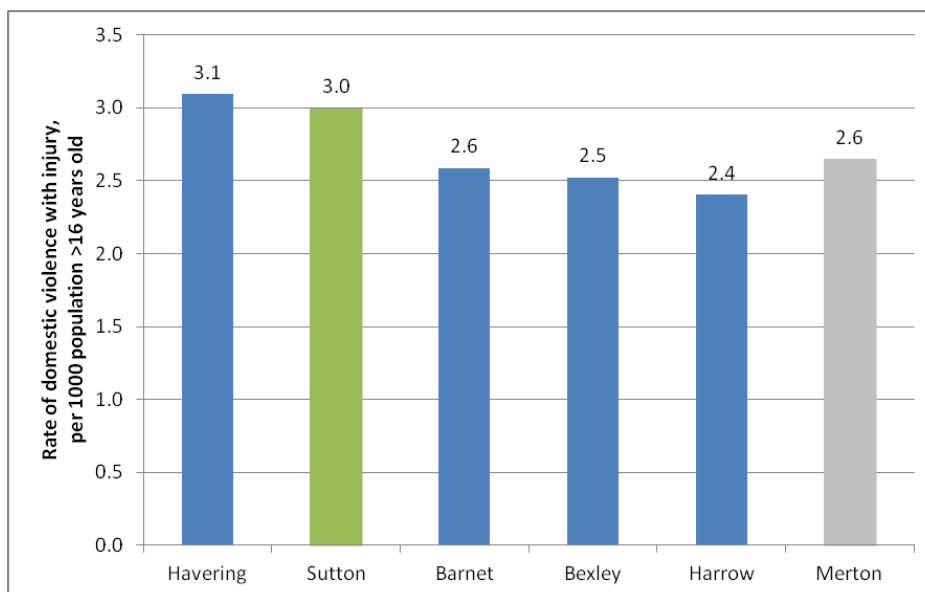


Figure 5: Domestic incidents reported to the police in Sutton in one year (November 2013 – October 2014)

Source: Sutton Community Safety Partnership Strategic Assessment (2014/15)

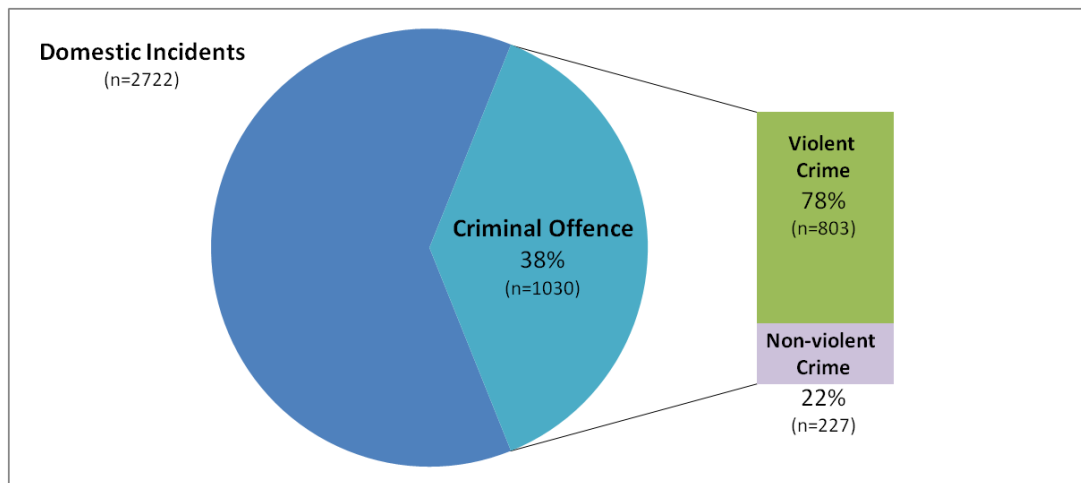


Figure 6: Domestic Violence in Sutton; crimes by age of victim and the age distribution of the population (2014)

Source: Sutton Community Safety Partnership Strategic Assessment (2014/15) and Office for National Statistics

