

Fact Sheet

Vulnerable Children in Sutton

Sutton child population

Child Borough profile*

	Sutton	London	England	UK
Percentage of 0 to 17 year olds in the population is	23.36%	22.68%	21.34%	21.14%
Percentage of 0 to 4s in the population is	6.85%	7.07%	6.09%	6.00%
Percentage of 5 to 17 year olds in the population is	16.51%	15.61%	15.25%	15.14%

The overall child population (0 - 17) is: 47,469. Under 19 year olds account for 24.46% of LBS's population which is estimated at 203,243 residents in Sutton.

According to the ONS Population Projections, the change in the under 19 population from 2016 to 2026 is a 14.3% increase overall.

Number and type of School 2018

School Type	Primary	Secondary	Primary and Secondary
LA Maintained	22	2	0
Academies	18	13	0
Academy Special	1	1	2
Nursery Schools	2	0	0
Special Schools	0	0	1
Pupil Referral Unit	0	0	2

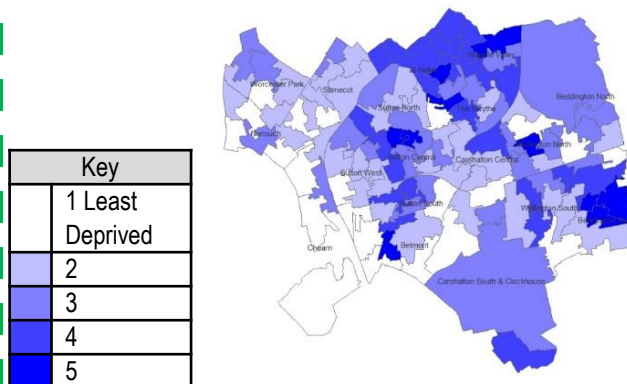
Child poverty and Free School Meals indicators

According to the Department for Work and Pensions (DWP) the % of children in low income and material deprivation is 11%

Free School Meals (FSM)	
According to the School Census May 2018 the % of FSM children is	11.47%
The highest proportion of children receiving FSM are in Special Schools and Prus:	49.39%
The lowest proportion is in Secondary Schools:	8.46%
Primary Schools proportion is:	13.29%

This is the number of children who are claiming FSM, not the number who are eligible; includes children who attend schools in Sutton but live outside the Borough.

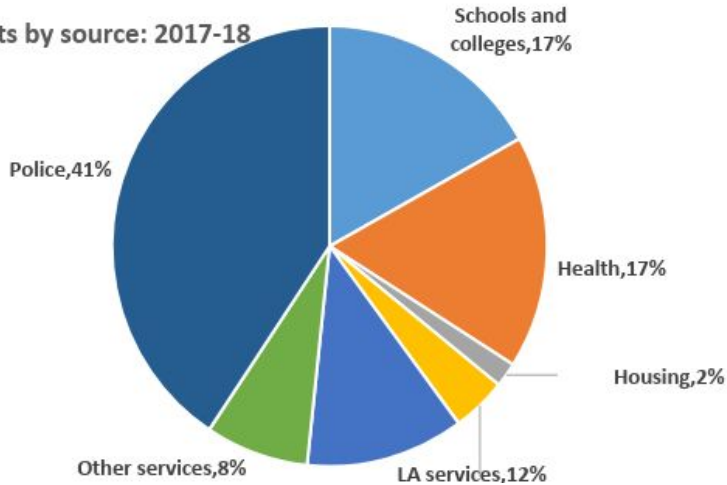
Income Deprivation Affecting Children Index* (IDACI, 2015)



Multi-agency Safeguarding Hub (MASH)

Number of contacts by source

Contacts by source: 2017-18

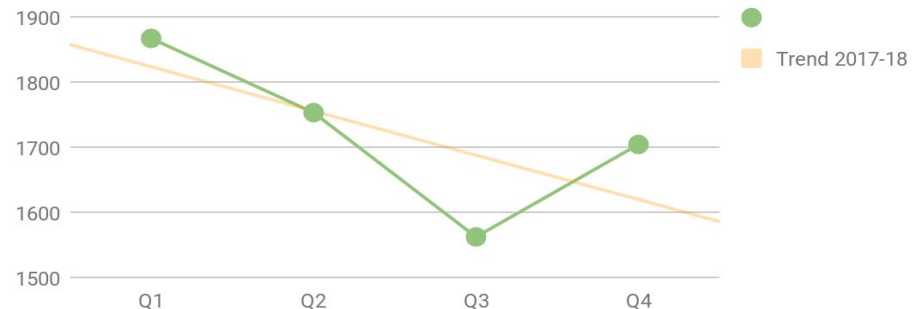


Agency	2015/16	2016/17	2017/18
School and Colleges	1018	1225	1164
Health Services	1171	1272	1181
Housing	87	97	124
Individuals	260	325	279
LA Services	846	721	811
Other Services	680	619	529
Police	3741	3550	2802
Total	7805	7809	6890

Definitions

- A 'contact' is the initial step into children's social care statutory services.
- The number of contacts in 2017-18 was lower than for previous years.
- Most contacts were from the police (40%), followed by education services (17%) and health (17%).

MASH Contacts by Quarter 2017-18



Children in Need in Sutton

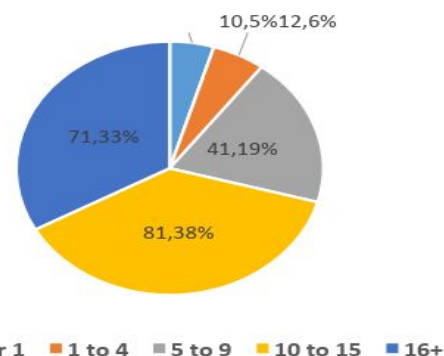
Child social care profile

- Please see below table for information*

Area	2016-17 rate per 10,000 children		
	Children in Need	Children with a child protection plan	Looked after children
Sutton	369.2	48.3	49.0
Outer London	308.1	36.7	45.0
Statistical neighbours	309.2	42.8	49.0
England	330.4	43.3	62.0

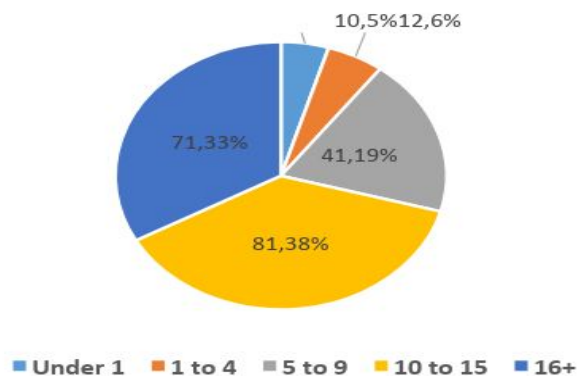
These are figures from the previous year as comparative data for 2017-18 has not yet been published.

No of Looked After Children at 31 March 2018 by age group



Source: Child in Need Census 2017-18

No of Looked After Children at 31 March 2018 by age group



Source: Child in Need Census 2017-18

Analysis

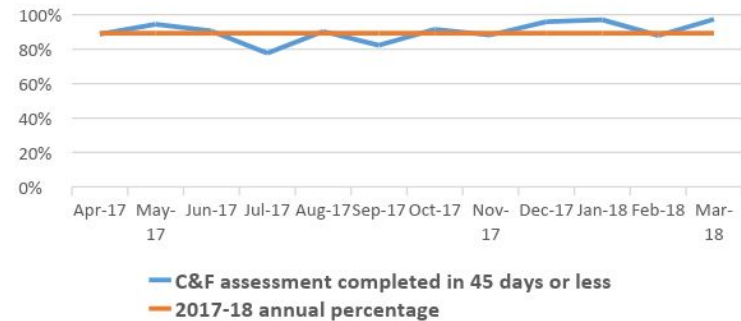
- In 2016-17 (the latest year for which comparisons are available), Sutton had a higher rate of Children in Need and Children on a Child Protection Plan than the average for Outer London, Statistical Neighbours, and England.
- The rate for Looked After Children in Sutton was the same as that for our statistical neighbours, but higher than for Outer London.
- On 31 March 2018, there were 1560 Children in Need in Sutton (down from 1731 in 2017). These include looked after children and care leavers and those on a child protection plan. Of the children in need, over a third were aged between 10 and 15.
- There were 215 Looked after Children on 31 March 2018 (down from 231 in 2017). Of these, 38% were aged between 10 and 15 and less than 10% were aged under 5.

Children in Need activity 2017-18

Comments:

- The percentage of child and family assessments completed within 45 working days has remained fairly steady throughout the year.
- There were 1961 completed assessments reported in the Child in Need Census for 2017-18 and 89% of them were completed within the 45 day deadline.

Percentage of Child and Family Assessment completed within 45 working days or less: 2017-18



Source: Child in Need Census 2017-18

Comments:

- Three quarters of the Initial Child Protection Conferences which took place in 2017-18 were completed within 15 working days of the strategy discussion which led to the section 47 investigation.

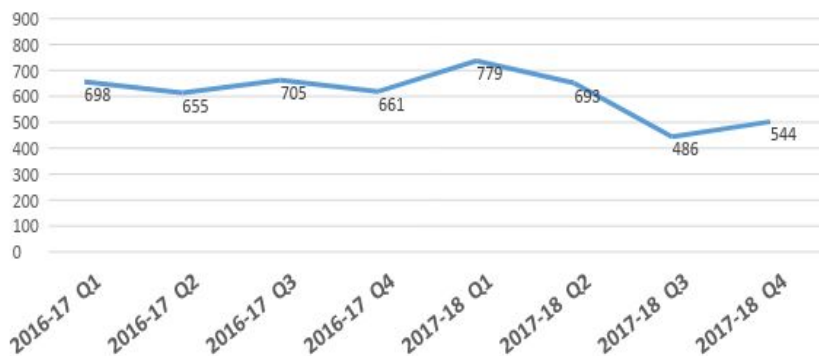
Percentage of ICPCs held within 15 working days of the strategy discussion: 2017-18



Source: Child in Need Census 2017-18

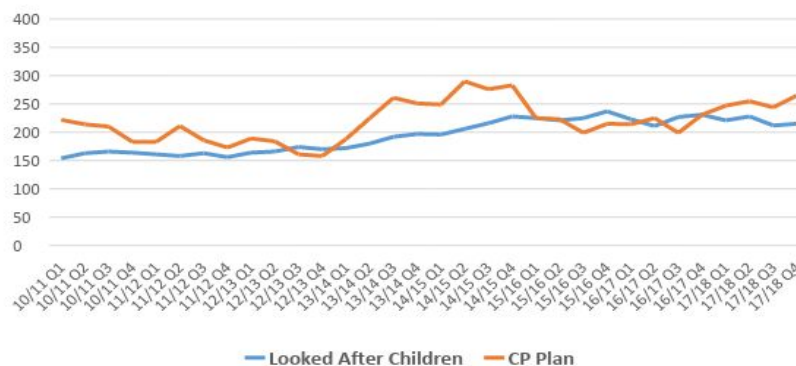
Children in Need activity 2017-18

Referrals to statutory services by quarter:
2016-17 & 2017-18



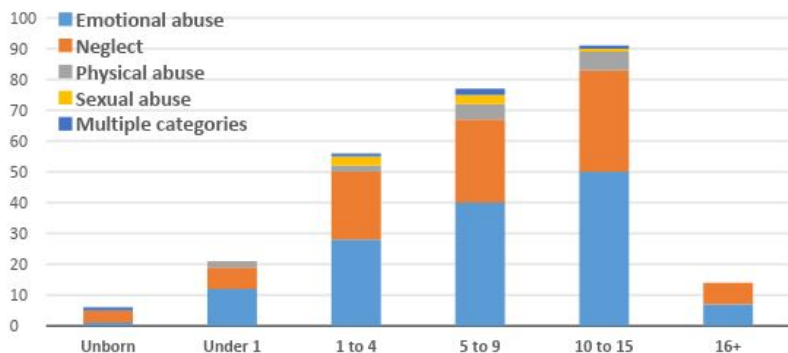
Source: Child in Need Census 2016-17 and 2017-18

Looked after Children and CP Plans:
2010/11 to 2017-18



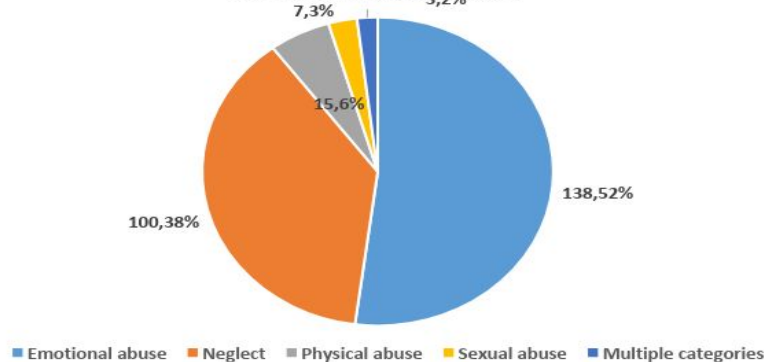
Source: Child in Need Census 2016-17 and 2017-18

Children with CP Plans on 31 March 18
by age band and category of abuse



Source: Child in Need Census 2016-17 and 2017-18

Child protection plans on 31 March 2018
by latest category of abuse



Source: Child in Need Census 2016-17 and 2017-18